

# Belsize Architects submits plans for timber-framed block in North Kensington

 [architectsjournal.co.uk/news/belsize-architects-submits-plans-for-timber-framed-block-in-north-kensington](https://architectsjournal.co.uk/news/belsize-architects-submits-plans-for-timber-framed-block-in-north-kensington)

By Kit Heren

February 27, 2023



The block, a mix of commercial units on the ground floor and eight flats above set back from the street, would replace a vacant industrial site.

The architects said the main design challenge was integrating the building into the existing neighbourhood, which is largely residential and includes the Oxford Gardens conservation area. They chose brick as the main building material to facilitate this.

Backed by developer Artedi, the scheme would have an internal structure largely built of timber, alongside some steel elements. Floor structures would be cross-laminated timber. Air source heat pumps will heat and cool the building.

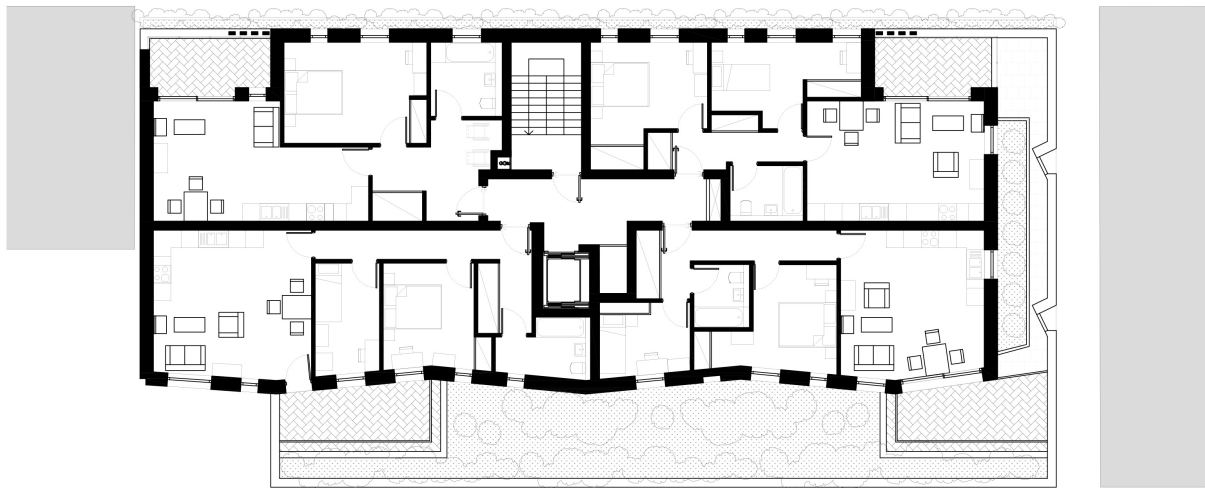
‘The elevation has a vertical zig-zag rhythm, a nod to the bay window motif which appears throughout the area, and creates a break and softens the scale of the development,’ the architects added.

Some people have voiced their opposition to the plans after they were submitted earlier in February. One objector said: ‘Developing Latimer Road is a white elephant.’

A member of the local residents' association said they 'emphatically object to this development, which should not be allowed in any scenario by the council', claiming that it would damage the community by blocking light to buildings opposite.

The developer said the step-back to the taller parts of the building would lessen the reduction of sunlight to the neighbours.

A future timescale for the scheme is not yet known.



Third floor plan

## Project details

---

**Location** Royal Borough of Kensington and Chelsea

**Type of project** Mixed use

**Client** Private developer

**Architect** Belsize Architects

**Planning consultant** Savills

**Heritage and townscape consultant** HCUK Group

**Fire consultant** Vemco Consulting

**Community engagement consultant** Concilio Consult

**M&E consultant** P3R Engineers

**Flood risk and drainage consultant** EAS

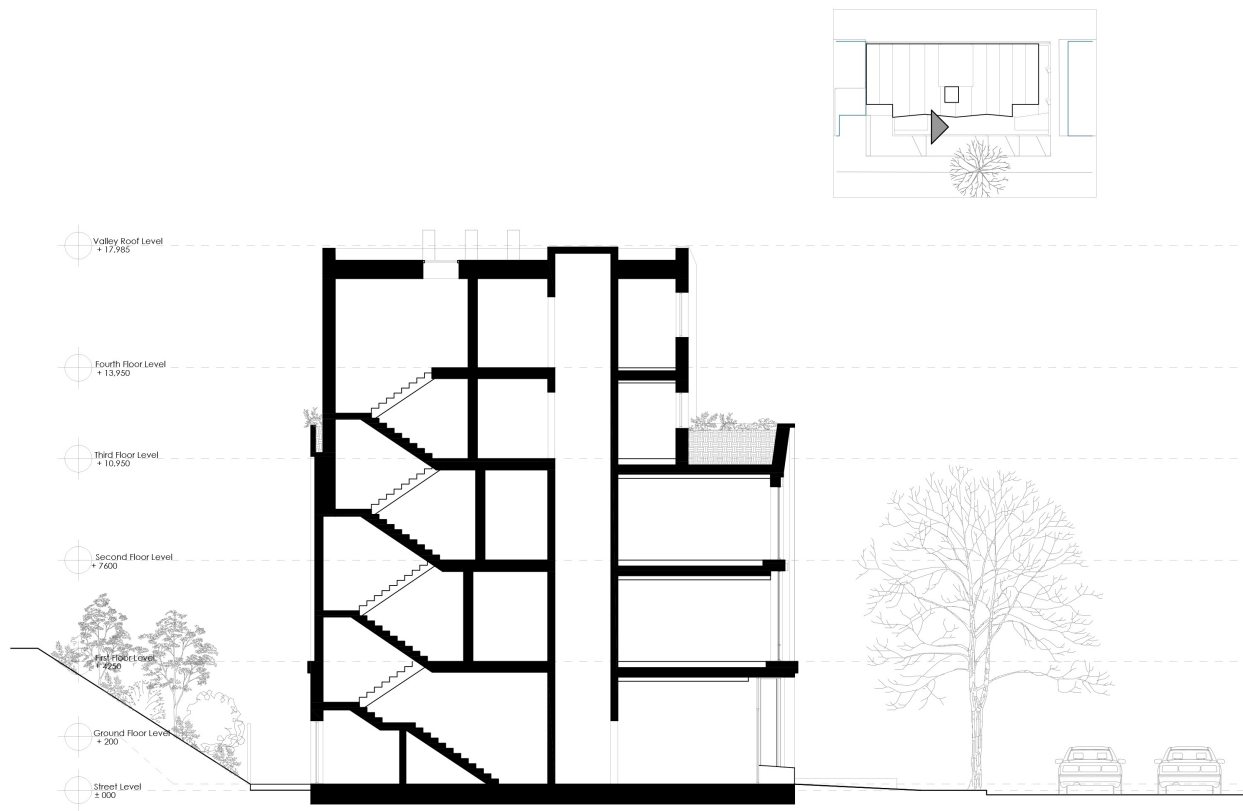
**Delivery and servicing plan consultant** EAS

**CTMP consultant** Markides Associates

**Contamination consultant** Geocon

**Daylight and sunlight consultant** T16 Design

**Energy and sustainability consultant** T16 Design  
**Air quality consultant** AQA Assessments  
**Tree consultant** Andrew Day Consultancy  
**Acoustic consultant** KP Acoustics



Section