



20 YEARS  
20 STORIES  
20 HOMES

BELSIZE ARCHITECTS

BELSIZE  
ARCHITECTS

Belsize Architects was founded 25 years ago. Each project we have undertaken has its own story and to mark the occasion 25 of our clients have been kind enough to tell us what they feel about their homes.

We have gone back and looked at a selection of projects, including the very first, in order to focus less on the architecture and more on some of the people we had the pleasure to design for, with the aim of understanding the impact our work has had on their lives.

This brochure contains a single image of each of the projects we have selected together with an extract of the reaction the client has given.

Ultimately the most rewarding aspect of our work has been being able to bring joy to people and uplift their everyday experience of being at home.

We extend our thanks to all the clients and collaborators we have met along the way without whom none of this would have been possible.

Gloucester Gate, 1995  
Frognal, 2004  
Cannon Place, 2005  
Hanover Terrace, 2007  
Sheldon Avenue, 2007  
Park Square Mews, 2008  
Parliament Hill, 2008  
Nassington Road, 2008  
Carlingford Road, 2009  
Park Village West, 2011  
The Brassworks, 2012  
Pond Street, 2012  
Rathbone Street, 2013  
Beaumes de Venise, 2013  
Klippan House, 2013  
South Hill Park, 2014  
Belsize Lane, 2015  
Hampstead Lane, 2015  
Kent Terrace, 2016  
Nutley Terrace, 2016  
Ferncroft Avenue, 2017  
Southwick Yard, 2017  
Marylebone Duplex, 2019  
Harmood Street, 2020  
Chalet Cowan, 2020





***“A new glass room, the first of its kind in the Regents Park Estate, is formed in the rear courtyard of the Grade 1 listed building. Water from a wall fountain in a small garden finds its way into the room beneath the glass floor.”***

**Gloucester Gate, 1995**



***“Apart from the size of the freezer, this house was absolutely made for a stay at home, enjoy, learn and grow experience!”***

**Frognal, 2004**



***“We love the brave and visionary intervention into the semi-detached Edwardian house with spatially connected floors and clever ways of getting light into the north-facing house.”***

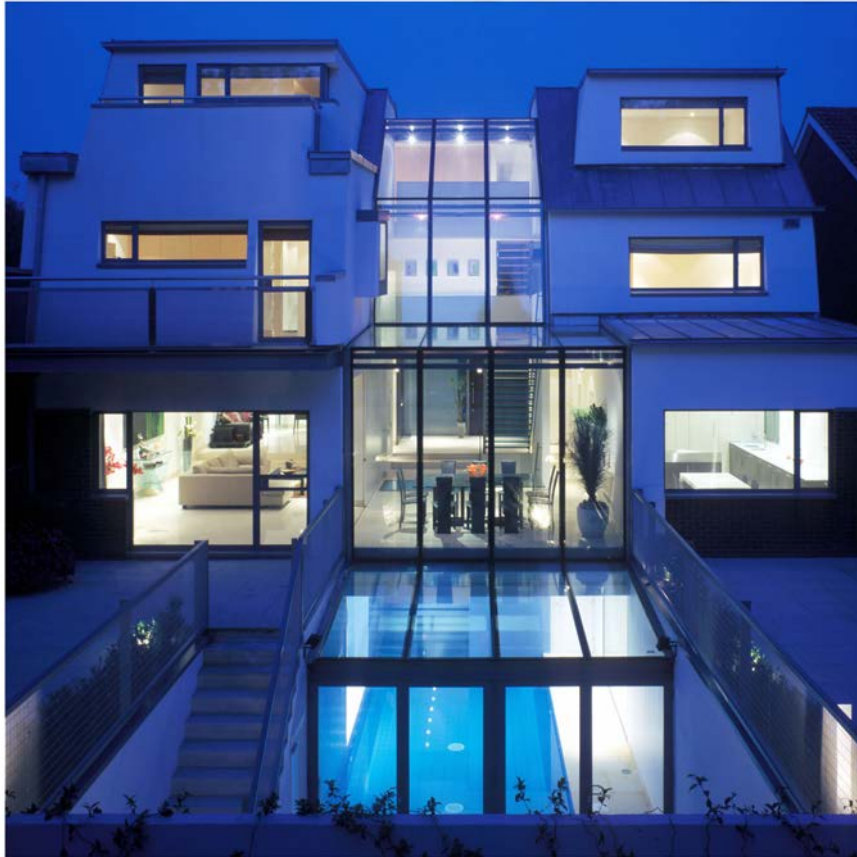
**Cannon Place, 2005**



***“Belsize Architects’ work in this house created a trend in the Grade 1 listed terrace and beyond. The conservation officer said that people keep coming and wanting the same design! Some people did just that!”***

**Hanover Terrace, 2007**





***“A modest two storey contemporary house when seen from the street transforms into four stories overlooking the garden. Water, views and light are the running themes throughout.”***

**Sheldon Avenue, 2007**





***“The creation of a spacious, open, comfortable, 3 bedroom mews house out of two small garages and a one bedroom flat seemed almost impossible.”***

**Park Square Mews, 2008**



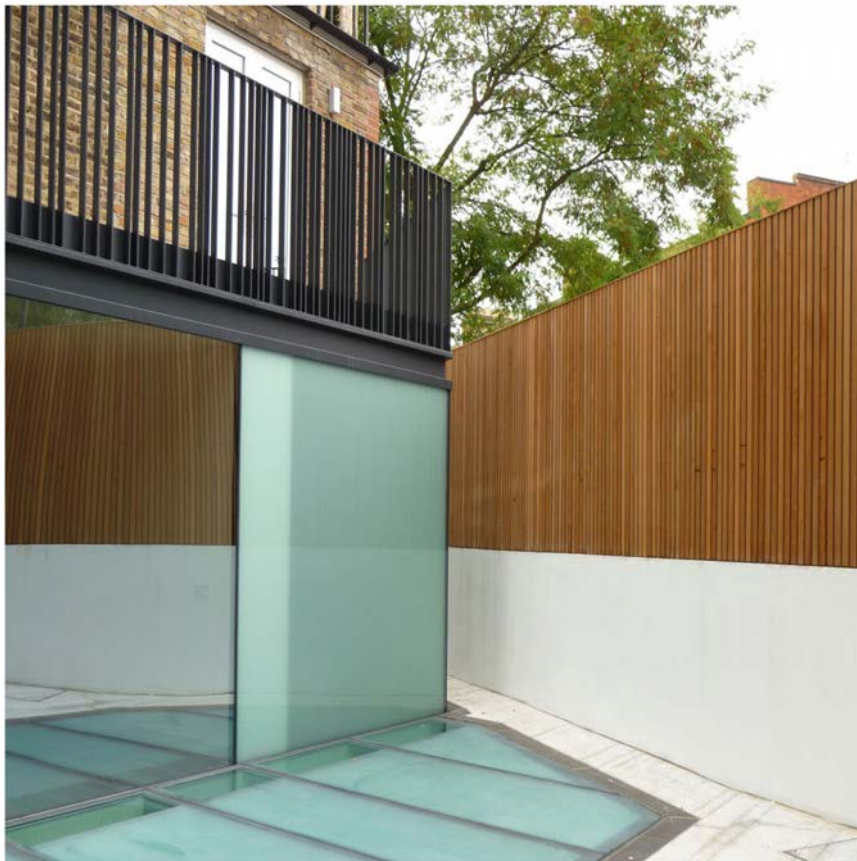
***“Shahriar made us understand what design meant. We love the creativity that has gone into the design of our home.”***

**Parliament Hill, 2008**



***“The original brief from the client suggested getting rid of the tree right in the middle. We persuaded them that instead the house needed to be organised round the tree and they were delighted that we did.”***

**Nassington Road, 2008**



***“Unanticipated news of the imminent arrival of twins in the middle of the design work required considerable ingenuity in excavating two further rooms below to fill the house with light and surprises.”***

**Carlingford Road, 2009**





***“I just wanted to tell you how much we are loving being back in our home in PVW, and how that is in no small part because of the amazing result you created for us. During the four years we were away we learned the difference between ordinary work and great work. We also learned to appreciate fully how inspired is the design that you turned into reality. This house is testament to the powerful effect on one’s wellbeing of great architectural design.”***

**Park Village West, 2011**



***“The Brassworks is a stylish and successful addition to the Church Commissioners’ portfolio. Belsize Architects brought their knowledge and skill to the project and the building successfully combines the building’s history and architectural heritage with contemporary design.”***

**The Brassworks, 2012**



***“Having failed to get permission for altering and extending our Grade 2 listed building, we sought help from Belsize Architects who managed to surprise us with what one could get out of a small Georgian house.”***

**Pond Street, 2012**



***“The design embraces the unusual shape of the flat, which sits across two buildings, by accentuating the asymmetrical aspects and integrating them within the living space. This, together with the use of design elements such as angled glass, unusual window and integrated lighting details, created a living space which has remained constantly interesting over the years.”***

**Rathbone Street, 2013**





***“The double height atrium on entering the house, and the continuous stone cladding on the floors and some of the wall areas, give a feeling of space. The large windows on either side of the open plan living area, and the continuation of the kitchen into the outside, create an interior living space that brings in the light and natural surroundings of this rural property, making it a harmonious part of its surroundings and reminding you always that you are surrounded by nature.”***

**Beaumes de Venise, 2013**



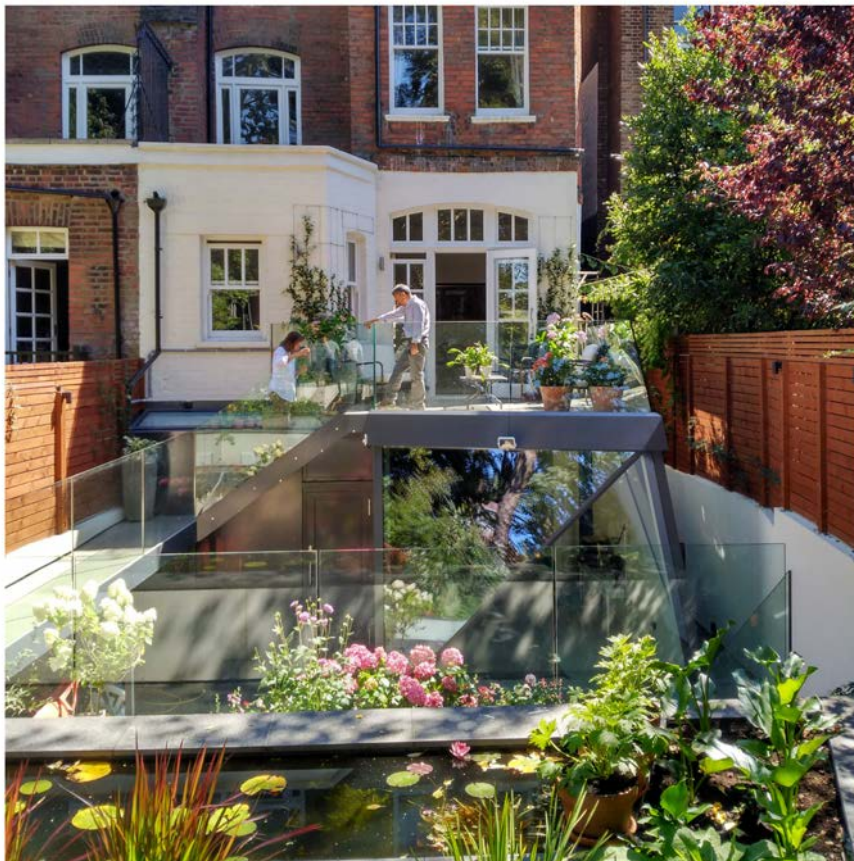
***“Belsize Architects’ intensive exploration of the history of the listed building, combined with the contemporary elements that they brought into it, made it unique.”***

**Klippan House, 2013**



***“The extension and alterations created a community home hugging the garden. After so many years, going to the kitchen, with its breath-taking geometry of solid and transparency still creates happiness for us.”***

**South Hill Park, 2014**



***“Shahriar and his team’s vision was not only to create an aesthetically beautiful home but literally to turn around the way we lived through 180 degrees! Connecting our outside space seamlessly to our kitchen and living area changed the way we lived, and it has evolved into wonderful and practical home.”***

**Belsize Lane, 2015**





***“The house, with light pouring in from the top skylight, double height living room and large windows to the rear, together with a large sunken courtyard, created a joyful place for me and my family. I smile as I enter the house every day.”***

**Hampstead Lane, 2015**



***“The house, with light pouring in from the top skylight, double height living room and large windows to the rear, together with a large sunken courtyard, created a joyful place for me and my family. I smile as I enter the house every day.”***

**Kent Terrace, 2016**



***“Two spacious houses with living rooms at the top with access to terraces with magnificent views, replacing 6 shallow depth garages, were skilfully sculptured by Belsize Architects. This was our third project together.”***

**Nutley Terrace, 2016**



***“I love the lines and the space and light created throughout the house. Lockdown period made us realize how much we love the house.”***

**Ferncroft Avenue, 2017**





***“The house should be an example of how to create a joyful and spacious house in a small brownfield site with such care and sensitivity.”***

**Southwick Yard, 2017**



***“For me, style is essentially doing things well. It can’t specifically be defined or analysed. In our third floor Georgian duplex flat Belsize Architects, through their plethora of ideas, architectural art and decor, have managed to create a home of interior beauty and inspiration. It is creative, classy and a dreamy little Paradise with a very unique style.”***

**Marylebone Duplex, 2019**



***“I was expecting something special, but this exceeded all my expectations.”***

**Harmood Street, 2020**



***“We are working on our third project together, so clearly something has worked! They understand it is the client’s project. Equally, they understand when to “make the case” where it is the right thing for the project.”***

**Chalet Cowan, 2020**



BELSIZE  
ARCHITECTS