

# Inform

architecture today

SPRING 2017

HOUSING PROJECTS BY BELL PHILLIPS,  
BELSIZE ARCHITECTS, NAPIER CLARKE,  
DE ROSEE SA, TURNER ARCHITECTS,  
PATEL TAYLOR, LIFSCHUTZ DAVIDSON  
SANDILANDS AND SHEPPARD ROBSON







## Angle poise

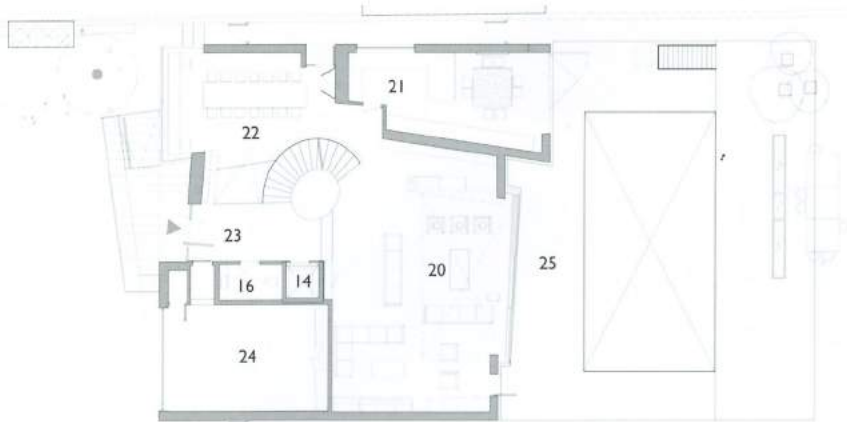
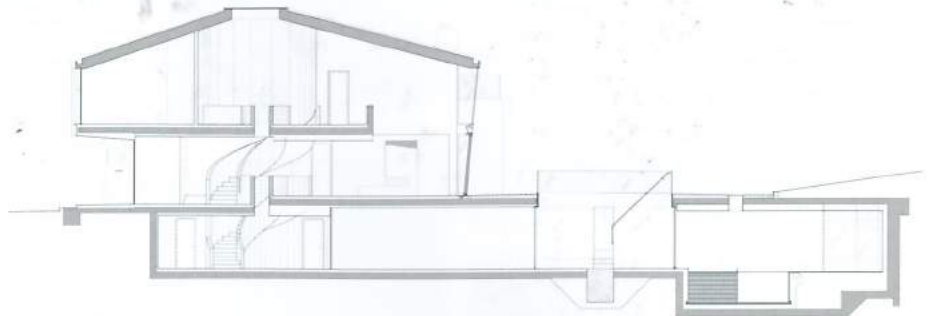
*A substantial house in north London by Belsize Architects draws inspiration from its suburban context.*

**H**ampstead Lane by Belsize Architects replaces an outdated post-war villa within a conservation area in Highgate, north London. In addition to providing the client with a spacious family home, the main objectives of the brief were to include ample space for entertaining, and to exploit the views towards the golf course located at the rear of the site.

From the street, the house presents itself as a contemporary interpretation of neighboring suburban villas. A red brick-clad facade sits beneath a high-pitched roof, and is punctured by a series of angular glazed inserts. Expanses of white render and glazing to the rear juxtapose with the more traditional front elevation and flood the interior spaces with natural light.

The double-height living area is connected to an enclosed rear patio through full-height sliding glass doors and a stone floor that flows from inside to outside. Separated from the rest of the floor plan, the kitchen and second dining area are smaller in scale to suit everyday family use. A translucent glass spiral staircase is lit from above, forming a sculptural element. On the first floor, each en-suite bedroom has its own balcony from which to enjoy the view.

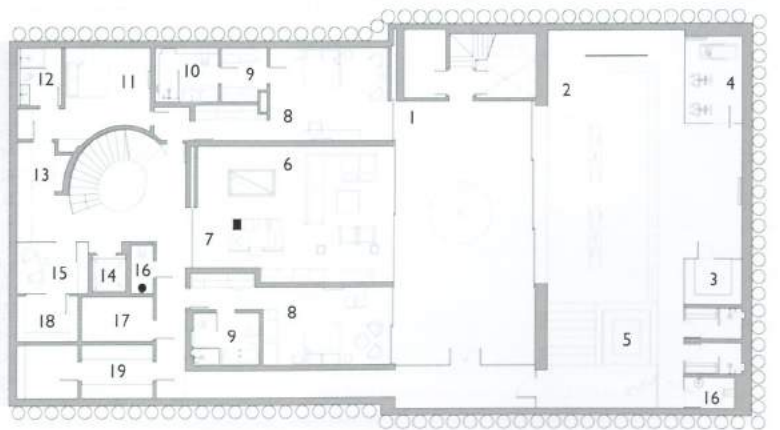
Located above the living area is an office mezzanine with integrated glass desks. A basement helps minimise the building's volume above ground, while providing additional living space and an indoor pool. The sunken courtyard provides a quiet contemplative space,



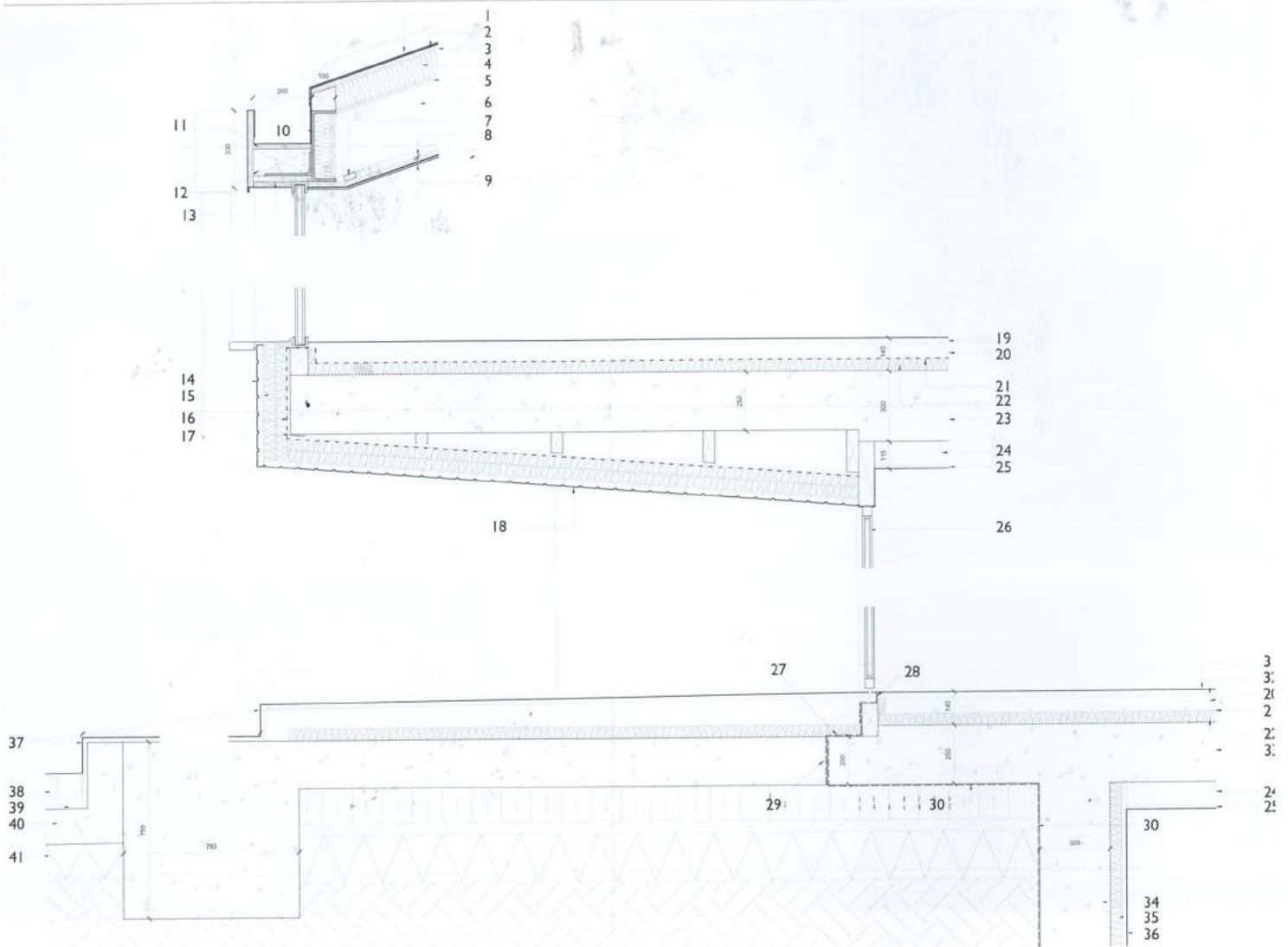
orientated to gain maximum sunlight throughout the day and allow daylight into the surrounding rooms.

The sustainable strategy utilises renewable energy and recycling where possible. A Metsec system with insulation packed between the studs was used to construct to external walls up to second floor level. An outer skin of Sto render was then applied to the concrete structure.

ABOVE Front elevation; dining room; basement courtyard.  
 RIGHT Rear elevation; basement, ground- and first-floor plans.  
 Key 1 courtyard, 2 swimming pool, 3 steam room, 4 gym, 5 Jacuzzi, 6 music room, 7 bar island, 8 bedroom, 9 ensuite, 10 wardrobe, 11 staff room, 12 staff ensuite, 13 general storage, 14 lift, 15 cigar room, 16 toilet, 17 plant, 18 wine cellar, 19 laundry/storage, 20 living room, 21 kitchen, 22 dining room, 23 hallway, 24 garage, 25 terrace, 26 main bedroom, 27 master bathroom, 28 office.







A highly insulated and airtight building envelope combined with stack ventilation and solar-reflecting, double-glazed, argon-filled windows ensure thermal efficiency. Solar panels heat the swimming pool and supply most of the house's hot water needs. Rainwater harvesting is used to irrigate the garden. The house is also fully accessible to wheelchair users, and includes widened doorways, generous circulation, a lift and an external access ramp.

**Credits** Architect: Belsize Architects; structure: Conisbee; m&e: RLA; interior: Bestetti Associati; qs: BTP Group; main contractor: Vascoft; Contractors; copper roof: KME; insulation: Kingspan Kooltherm; brick: Eurobrick System; internal wall, floor finish: Dinesen; doors: Albed; fireplace: Heals; lift: Lifts for London; garage door: Rundum Meir; glazing IQ glass.

**ABOVE** Detail section through front elevation. Key: 1 Standing seam brass roof, 2 geotextile membrane, 3 18mm sarking board, 4 100mm rigid insulation, 5 18mm WBP plywood, 6 50x250mm timber joists, 7 timber packing, 8 12mm WBP plywood, 9 15mm foil-backed wallboard, 10 100x300 PFC, 11 20mm WBP plywood laid on timber blocks, 12 insulated gutter, 13 200x100mm EA, 14 25mm brick slips with recessed joints, 15 100mm rigid insulation, 16 building paper membrane, 17 12mm external grade sheathing board, 18 brick slips set in plaster on expanded metal lath, 19 25mm engineered timber floor; 20 65mm screed and underfloor heating, 21 separation layer; 22 50mm floorboard, 23 300mm concrete slab, 24 100mm ceiling void, 25 15mm foil-back wallboard with skim coat, 26 entrance door; 27 waterproofing membrane, 28 1200-gauge PE DPC below threshold, 29 hydrophilic strip, 30 waterproof concrete, 31 20mm stone, 32 5mm adhesive, 33 250mm concrete slab, 34 250mm waterproof concrete, 35 50mm wallboard insulation, 36 plaster render; 37 3mm recess in stone, 38 100mm granite paving sets, 39 50mm bedding layer; 40 150mm concrete slab, 41 prepared subgrade.

