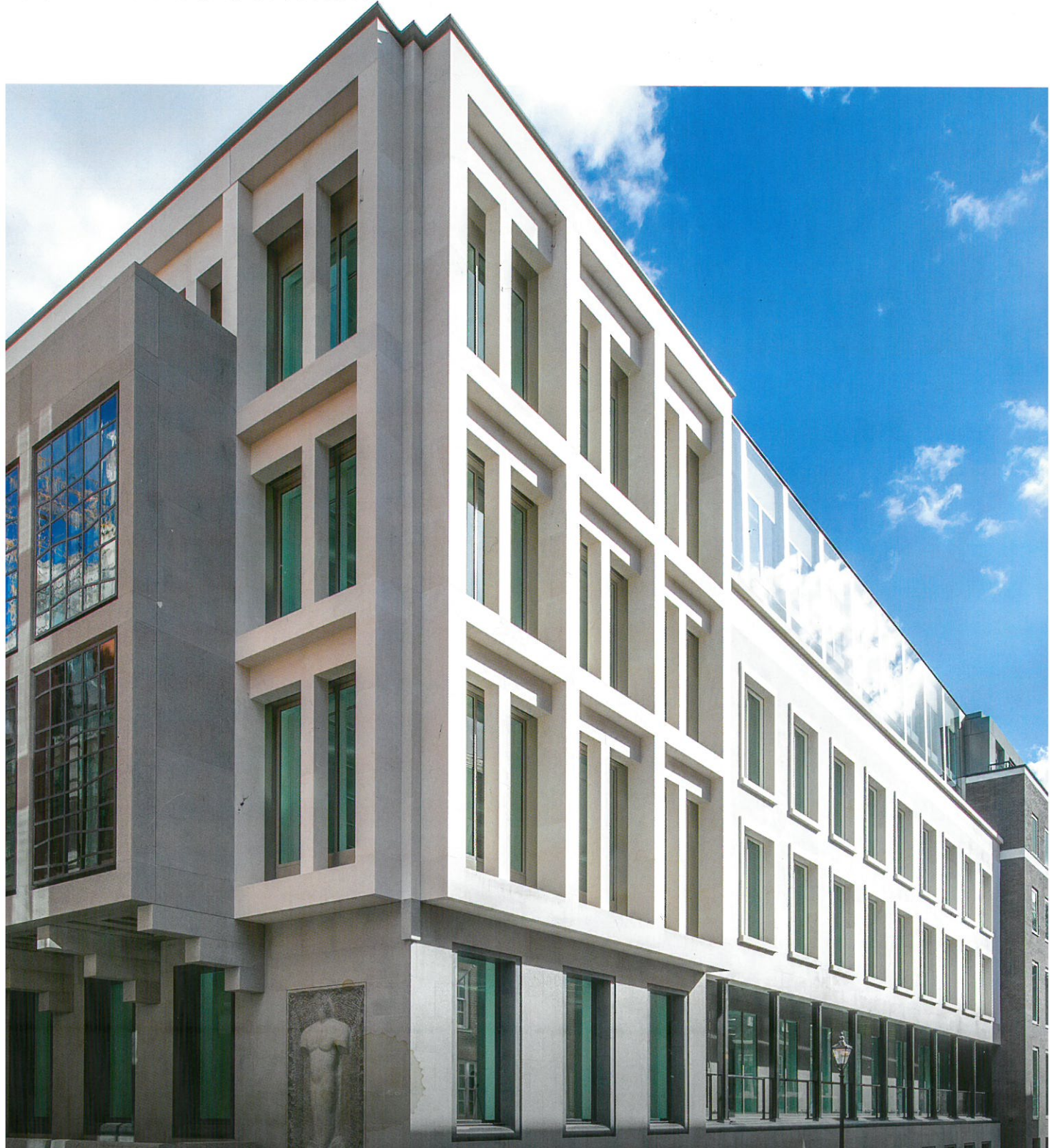


Natural Stone
Awards 2016

SOUVENIR PROGRAMME



Commended: Nutley Terrace

Client

Artedi

Architect

Belsize Architects

Main Contractor

B&G Construction

Principal Stone Contractor

Domus Facades Ltd

Stone Supplier

Domus Facades Ltd

Stone Used

Jura Beige Limestone

Designed by Belsize Architects, Nutley Terrace is a new build residential scheme, providing two spacious contemporary townhouses on a difficult brownfield site in a north London conservation area.

Nutley Terrace presents a rich, sustainable presence that complements its surroundings. A varied palette of stone, glass and timber creates an attractive and durable façade, which incorporates a series of spacious private roof terraces and balconies. This careful use of high quality materials creates a contemporary, confident and highly appealing presence

that successfully punctuates the street.

To the front, the building is clad from the first floor upwards in Jura beige limestone from Bavaria, with a sand blasted and brushed finish. Stainless steel brackets fix the stone to the secondary structure, which in turn is fixed

to the primary structure. The stone slabs are arranged vertically in three different lengths to provide an elegant and interesting façade. The narrowness of the stone slabs also allows the material to flow over the elevation's gentle curves, allowing for a smooth change to the plane of the façade.

The use of contemporary stone cladding was a critical factor in the project's success.

The judges commented that this was an interesting design, and noted the choice of material was a success, tying in well with the surrounding houses.



DOMUS FACADES

Natural Stone / Engineered Stone / Porcelain / Acrylic Stone / Aluminium

AS SPECIALISTS IN CLADDING PACKAGES WE OFFER RAINTREATMENT AND TRADITIONAL FIX SYSTEMS. WE DESIGN, WE MANUFACTURE AND WE INSTALL SAFELY

www.domusfacades.com / sales@domusfacades.com / call: 01737 771 499