

Plan

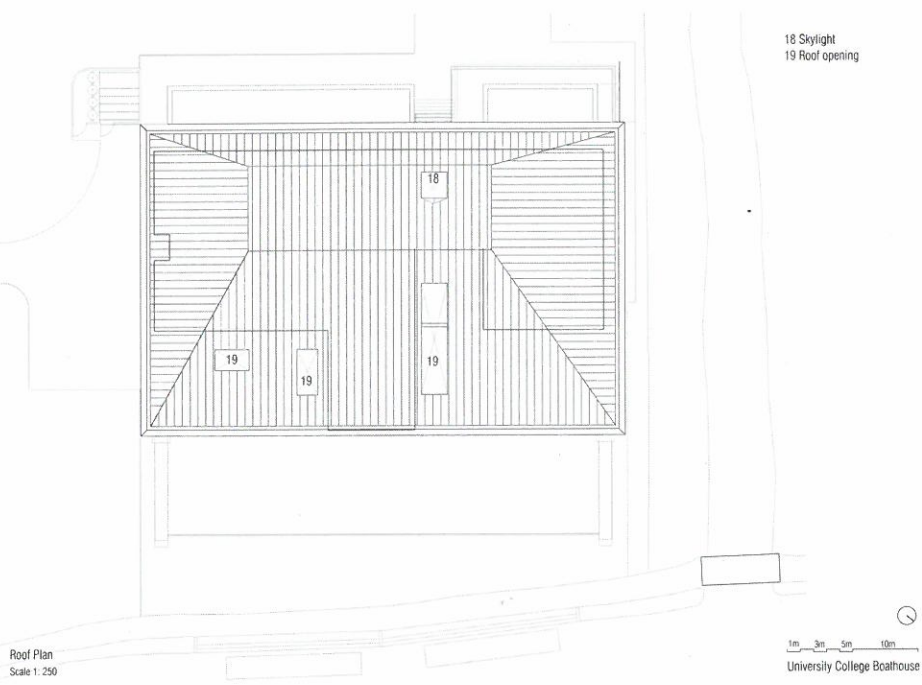
The Art of Architecture and Design

December 2008

WORLD'S GREATEST

Bocconi University by Grafton Architects scoops World Building of the Year Award

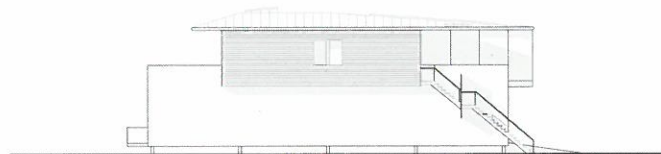
bles – Ruadhán MacEoin on Dublin's Decaux deal • In Practice with Deaton Lysaght • Leisure – this month's project focus



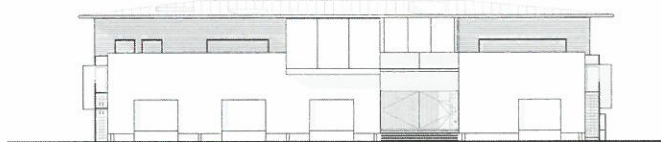


Architect: Belsize Architects
Planning Consultant: Barton Willmore
Structural engineer: AKSWard Ltd
Quantity surveyor: McBains Cooper Consulting Ltd
Contractor: Kingierlee Ltd

Brief: To replace the former Grade II listed boathouse that succumbed to arson in 1999 and design a building which would provide rowing, social and residential facilities. The new boathouse did not need to be as traditional in appearance as its predecessor, but it still had to be able to support as much tradition and pride as was vested in the original building. The design concept for the new Boathouse draws upon two main principles; firstly, the boats, the oars and the water all exhibited unique characteristics which were manifested in the upper roof. The goal was to achieve a sort of blade cutting the sky. The roof stretches over the entire building to provide shelter over the rowers and spectators. Secondly, the architects wanted the ground level of the building to carry a lot of mass for storage and security reasons, in as much as to prevent the occurrence of another arson attempt. Brick was an obvious choice of material for both its resistance to tampering, as well as its use as the predominate material of the previous building.



South East Elevation
 Scale 1: 250



North East Elevation
 Scale 1: 250

1m 3m 5m 10m
 University College Boathouse