

EXTENSIONS | SELF-BUILDS | RENOVATIONS | CONVERSIONS

Homebuilding & Renovating

*Britain's
Best-Selling
Self-build
Magazine*

Amazing Spaces

100s of Ideas to Help
You Create Beautiful
Architecture in Your Home

BLOCKWORK PROS & CONS

Is it Still the Best Way to Build?

PLANNING A KITCHEN EXTENSION

A 12 Page Expert Guide to
Concept, Design and Build

BRING IT IN ON BUDGET!

How to Make Sure Your
Estimates are Accurate

BARN PLANNING UPDATE

What the Changes to
the New Rules Mean

Building with Oak

The Ultimate Character Self-build



August 2015 | £4.35

Urban Homes

Need ideas for a new home in the city or town? You've come to the right place

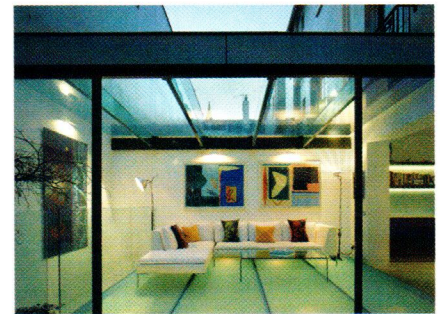


Red Squirrel Architects

Occupying a tight corner plot, you wouldn't think that this striking cedar-clad self-build was just 100m². Utilising space efficiently, the home even includes a sheltered courtyard



Designcubed Clever planning allows this single storey home to maximise every inch of available space on its tiny London plot

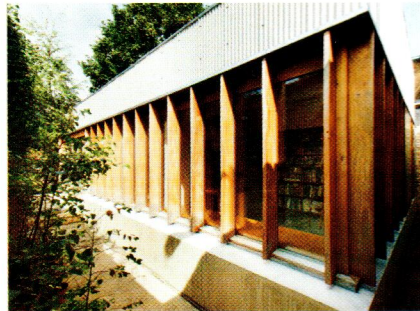


Belsize Architects

Adding a glazed basement extension provided this home with a light-filled studio



Crawford Partnership Two-thirds of this subtterranean home is hidden from view at street level



Hugh Strange Architects Hiding this 75m² London home behind a high perimeter wall offers privacy



Niche Architects Replacing a 1950s end terrace with this new home allowed for a basement level to provide extra space



Studio Bednarski A grill-like window structure adds architectural interest to this end-terrace home in the heart of London



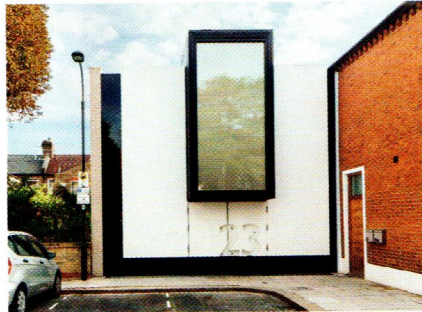
Carl Turner Architects Standing on a former brownfield site, this series of cantilevering boxes provides a striking exterior



John Osborn Design Bricks laid in Flemish bond and sash windows complement the neighbouring Victorian homes



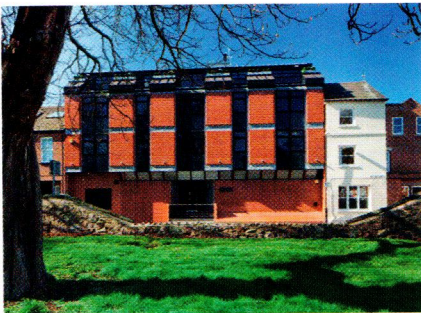
Hunter Architects and Planning This new-build home sits on an infill plot and draws influence from the vernacular



MATT Architecture This self-build on a former garden plot is packed with exciting features — including a hidden entrance



IBLA Frameless glazing, crisp render and an extension have taken this home from a dull semi to a modern villa



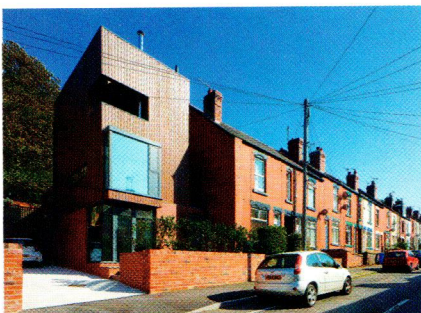
Self-designed From 1970s office block to ultra-modern home — the solution for city living



Henning Stummel Choosing to convert an industrial building instead of building new can provide a characterful home



Liddicoat & Goldhill Born out of the constraints of a small site, this striking home uses a flat roof to minimise its impact



Halliday Clark Architects This three storey end terrace in Sheffield has been designed to complement the streetscape



Riach Architects A large glazed basement extension offers family living space to a terraced home in the heart of Oxford

FIND MORE PROJECT
IDEAS ON OUR WEBSITE
➔ homebuilding.co.uk