

# Belsize Architects to build 'healthy house' in the Chilterns

1 DECEMBER 2020 - BY GREG PITCHER



1/10 Belsize Architects' Monkey Lodge scheme in the Chilterns

**Belsize Architects is to demolish a two-storey detached house in the Chilterns Area of Outstanding Natural Beauty and build a largely timber replacement**

The north London practice secured planning consent from Wycombe District Council for the Monkey Lodge scheme near Hambleden village.

A lodge has been on the site for about 140 years with the current house believed to have been built in the first half of the 20th century.

Belsize will create a two-storey dwelling on the same footprint as the existing house, using wood and flint as the main two materials.

The scheme will include photovoltaic panels, an air source heat pump and rainwater harvesting. A duck pond will form a landscaping feature as well as reducing the volume of impermeable surface on the plot.

The practice has specified local, toxin-free materials to reduce the project's carbon footprint and boost the wellbeing of residents.

Belsize said the existing house was 'not of value' and that its replacement was inspired by 'local vernacular architecture'.

It added: 'The building is shaped to provide well-oriented rooms and engaging spaces with well-thought-through circulation and to be capable of adaptation for older age.'

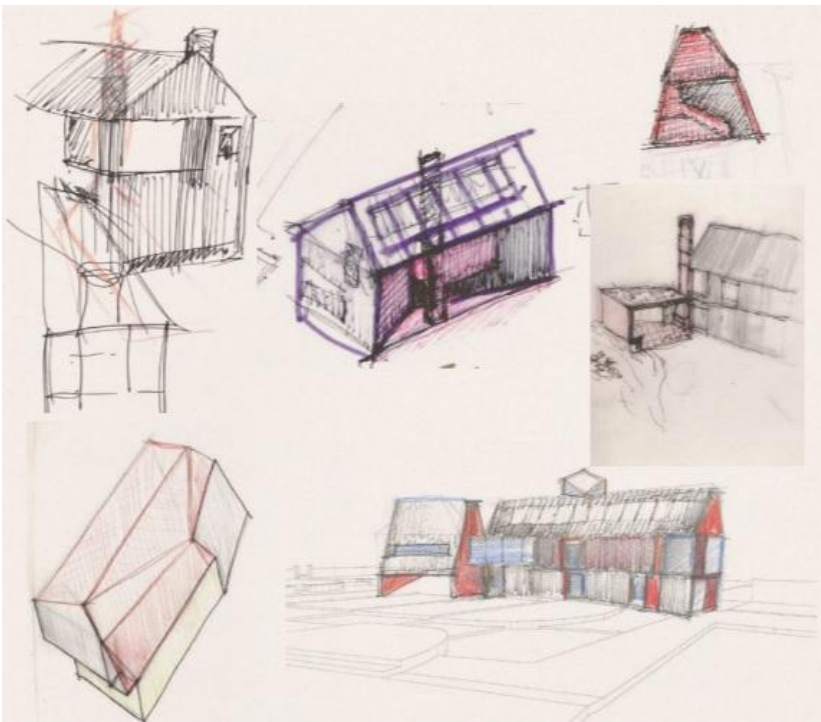
The ground floor will contain living, dining, laundry and utility spaces as well as a kitchen and a bedroom with en-suite bathroom.

The ground floor will have disabled access while, according to the planning officer report, a platform lift could 'easily' be added to the first floor.

The upper floor will contain two further bedrooms along with two bathrooms and a library.

The planning report added that the scheme was 'compatible with the established pattern of development in the surrounding area'.

Work could start on site early next year.



Belsize Architects' Monkey Lodge scheme in the Chilterns - design development sketches

---

**COMMENT AND SHARE**

---

**TAGS**

**BELSIZE ARCHITECTS CHILTERN WELLBEING**

---

**You might also be interested in...**



**Zaha Hadid Architects quits Architects Declare and blasts its leadership**



**David Chipperfield slams Bishopsgate Goodsyrd as mayoral inquiry begins**



**RIBA President's Medals 2020: Eco-projects win students top prizes**



**Butler's Wharf contest winner announced**

## Most Popular

1. Foster + Partners withdraws from Architects Declare
2. Grenfell inquiry: Kingspan manager said fire consultants could 'go f\*ck themselves'
3. David Chipperfield slams Bishopsgate Goodsyrd as mayoral inquiry begins
4. RIBA nets tens of millions as NBS sold again
5. RIBA: Former president to take charge of 'dysfunctional' board
6. Foster + Partners unveils double-decker solution to Hammersmith Bridge restoration
7. Untitled Practice completes 1.5km-long park system through centre of Brighton
8. 'RIBA chaos': Rob Dickins quits as chair of British Architectural Trust
9. ~~Alan~~ Howells' Birmingham tower proposal alarms campaigners
10. Emerging practice Detail Architects submits plans for Elland housing

## Leave a comment

**SIGN IN**

or

**REGISTER**

a new account to join the discussion.

Please remember that the submission of any material is governed by our [Terms and Conditions](#) and by submitting material you confirm your agreement to these Terms and Conditions. Links may be included in your comments but HTML is not permitted.

[CONTACT US](#)

[FAQS](#)

[ARCHIVE](#)

[WHY SUBSCRIBE](#)

[TIP US OFF](#)

[TERMS AND  
CONDITIONS](#)

[ADVERTISE WITH US](#)

[SPONSORED CONTENT](#)

[PRIVACY POLICY](#)